

Installation and user guide for Touch Calibration and Firmware upgrade APK rev3

Purpose:

The APK “TouchFWToolsAP_Sony-Ericsson-JDM-Platform-Signing-Live-54f9-3.apk” is to upgrade firmware or calibrate touch panel

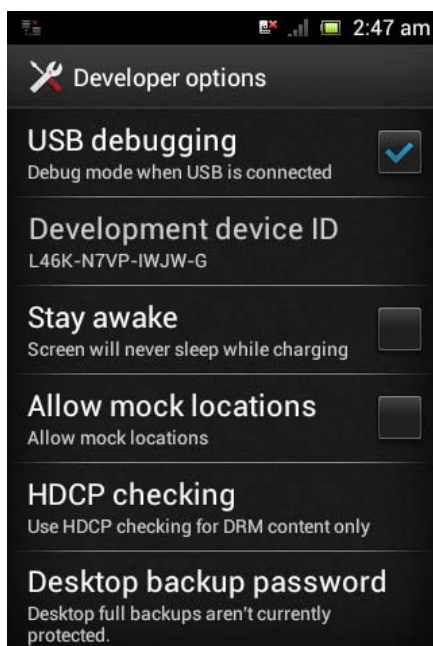
There are 6 chapters in this guide:

1. USB driver installation
2. Preparing SD card for ELK module FW upgrade.
3. How to install touch FW tool APK
4. How to use touch FW tool
5. How to test
6. How to remove APK

Caution:

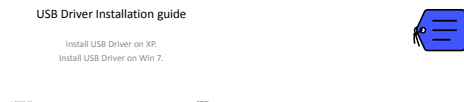
Please read 4-e (item e in chapter 4) and 4-f (item f in chapter 4) carefully and follow the rules before you execute calibration, otherwise, it could make the calibration fail.

- ✧ Before installation, please go to device and press menu key → “Settings” → “Developer options” to enable “USB debugging”

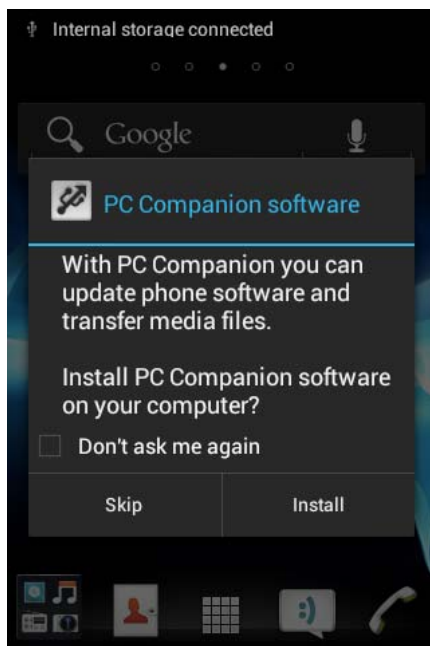


1. USB driver installation:

- Since the APK need to be installed by ADB command, please install USB driver first.
- There are 2 ways to install USB driver:
 - a. Via USB driver(Tamsui_USB_Driver_V2.0): Installation guide is in below file



- b. Via PC companion: When plugging USB cable, there is pop up window shown up in the device, tap "install" for installation



2. Preparing SD card for ELK module FW upgrade.

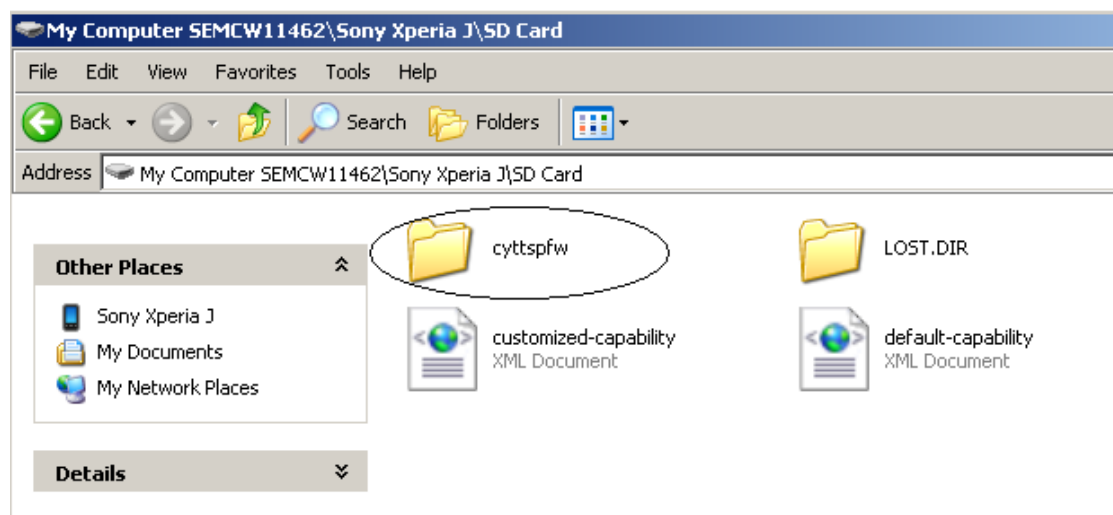
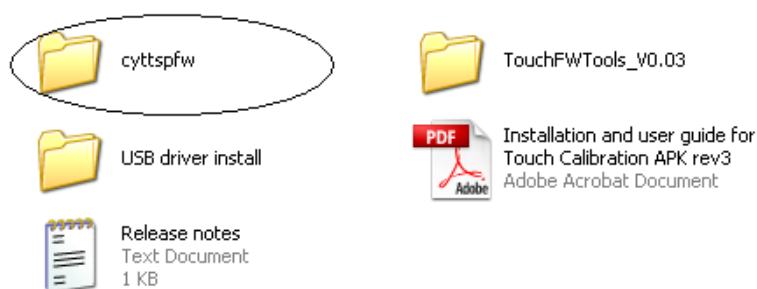
To be able to upgrade touch FW for ST26 JLO phones with ELK module you have to prepare a SD card and copy cyttspfw folder to this.

Use this SD card in all ST26 JLO phones that needs FW upgrade.

Create a SD card for FW upgrade.

Put a SD card in phone, go to Settings/Storage/Erase SD card/Erase everything

Copy cyttspfw folder to SD Card.



Note. Before you choose the touch FW in SD Card, you must insert this SD card in phone.

The FW downloader is only support ST26 JLO project and with the ELK module.

3. How to install touch FW tool APK

- Prepare a PC and connect to device with USB cable and wait for USB driver installs.
- Open TouchFWTools_V0.03 folder.
- Double click [adb_detect.bat](#) for connecting to device via ADB.



Below screenshot should be shown in PC:

```
D:\Project\Image\IAP\TouchFWTools>adb\adb kill-server

D:\Project\Image\IAP\TouchFWTools>adb\adb devices
* daemon not running. starting it now on port 5037 *
* daemon started successfully *
List of devices attached
BX9033TJBC      device

D:\Project\Image\IAP\TouchFWTools>adb\adb root
adb cannot run as root in production builds

D:\Project\Image\IAP\TouchFWTools>pause
```

- Double click [setup_TouchFWTools.bat](#) to install touch FW tool.



Below screenshot should be shown in PC:

```
D:\Project\Image\IAP\TouchFWTools>adb\adb uninstall com.fihspec.TouchFWTools
Failure

D:\Project\Image\IAP\TouchFWTools>adb\adb install TouchFWToolsAP_Sony-Ericsson-JDM-Platform-Signing-
Live-54f9-3.apk
2220 KB/s (35528 bytes in 0.015s)
pkg: /data/local/tmp/TouchFWToolsAP_Sony-Ericsson-JDM-Platform-Signing-Live-54f9-3.apk
Success

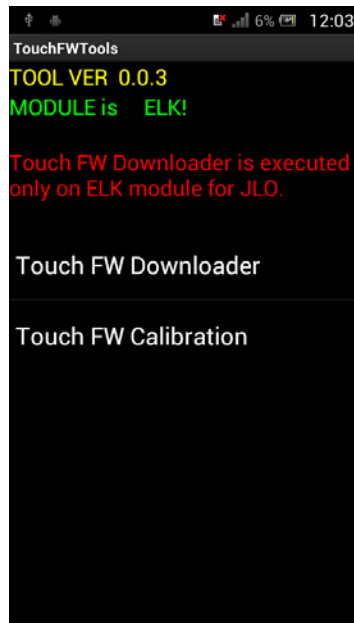
D:\Project\Image\IAP\TouchFWTools>adb\adb shell am start -n com.fihspec.TouchFWTools/.TouchFWCalibra
tion
Starting: Intent < cmp=com.fihspec.TouchFWTools/.TouchFWCalibration >

D:\Project\Image\IAP\TouchFWTools>pause
```

If you see message as above the touch tool APK are successful installed.

4. How to use touch FW tool

In the device, the TouchFWTools is also launched, refer to the screenshot below



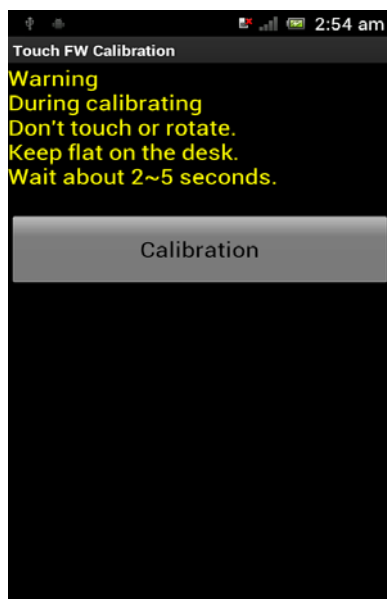
Then you can choose “Touch FW Downloader” to enter Touch Firmware upgrade or select “Touch FW Calibration” to enter Touch calibration.

NOTE: The FW downloader is only support ST26 JLO project and with the ELK module.

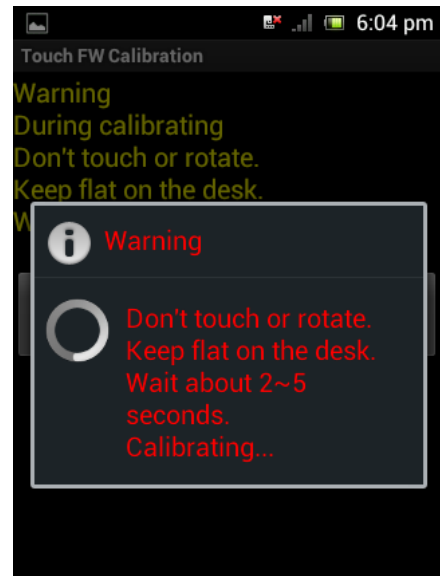
e. Unplug USB cable

The most important step, please remember to unplug USB cable before you execute calibration. The USB connection will interfere with calibration.

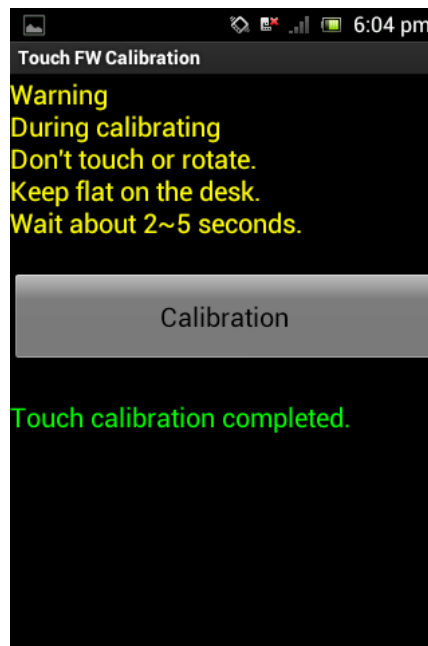
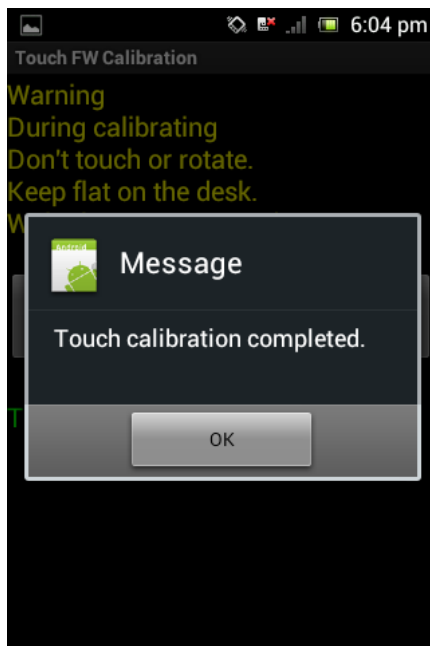
When you select “Touch FW Calibration” this screenshot will pop up.



- f. Press “**Calibration**” button to let the device execute auto calibration.
- Please keep flat on the wood-made desk before touch calibration.
 - Don't touch or rotate the phone during touch calibrating.
 - Wait about 2~5 seconds.

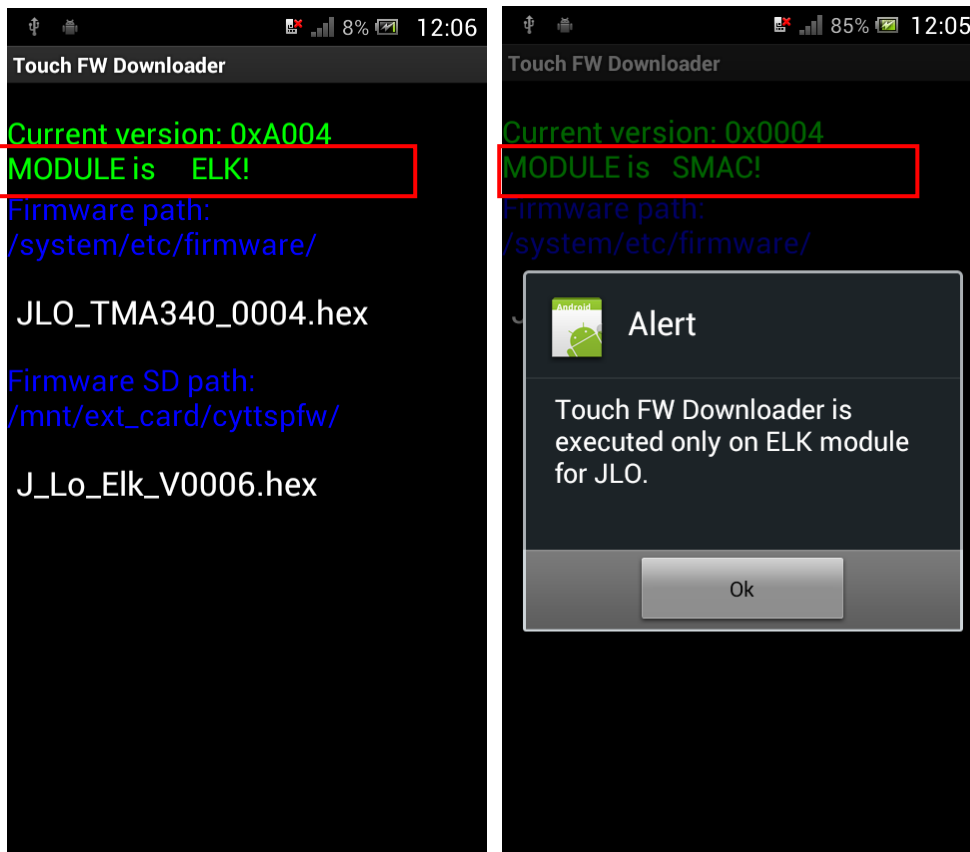


Press “**OK**” button after touch calibration completes. And then press BACK key to exit calibration.



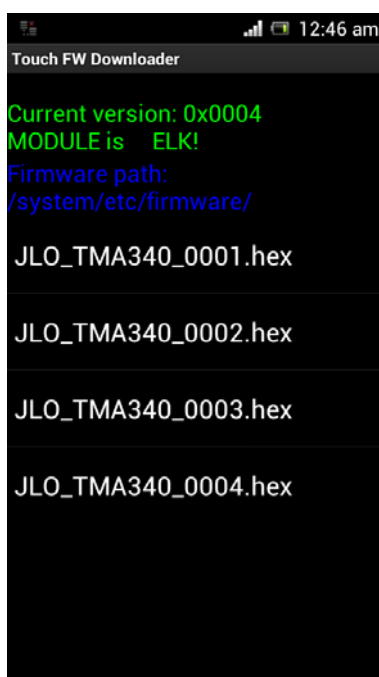
- ✧ If you enter “Touch FW Downloader”, you can tap the FW version then the device will execute firmware upgrade process.

You can check the module in the red area.



The default would show the FW in the device and SD as below,

Without SD card inside device

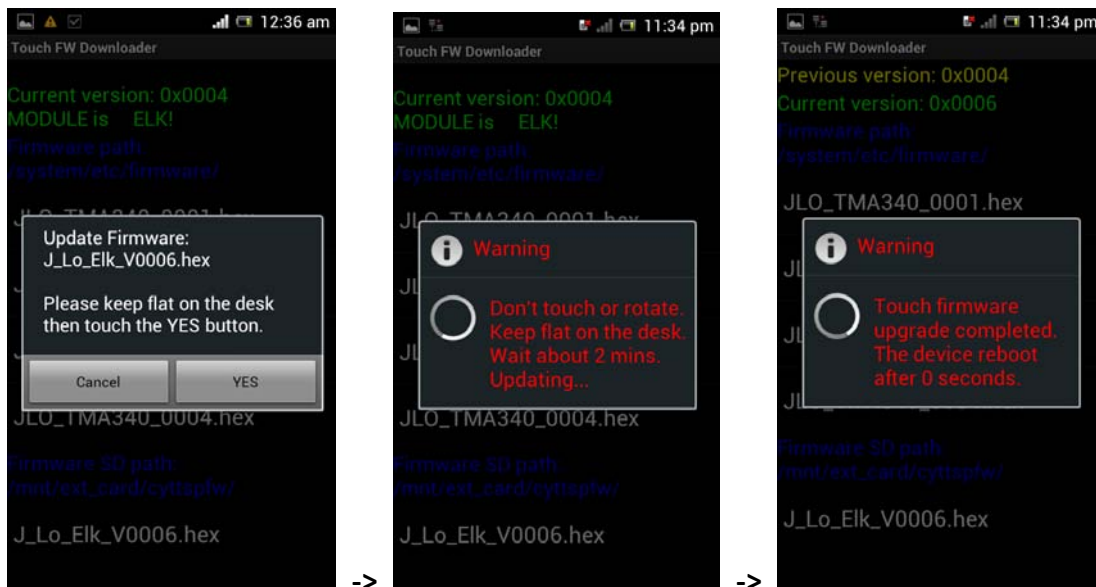


With SD card inside device



Note. Before you choose the touch FW in SD Card **J_Lo_Elk_V0006.hex**, you must insert the SD card.

Please don't touch or rotate the phone and keep flat on the desk during touch firmware upgrading. The device will be rebooted after firmware upgrade completed.



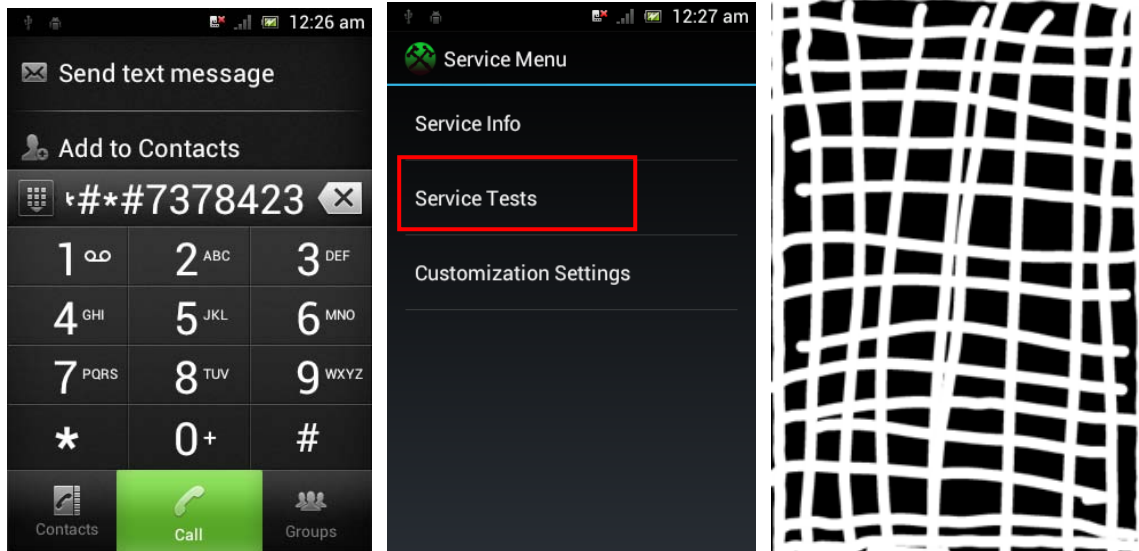
If upgrade done, you can remove SD Card for next device.

How to test

After finishing calibration, please go to Dialer page.

Dial ***##7378423##** to enter Service Menu.

Press **"Service Tests"** → **"Touch screen"** then draw the line to verify touch panel.




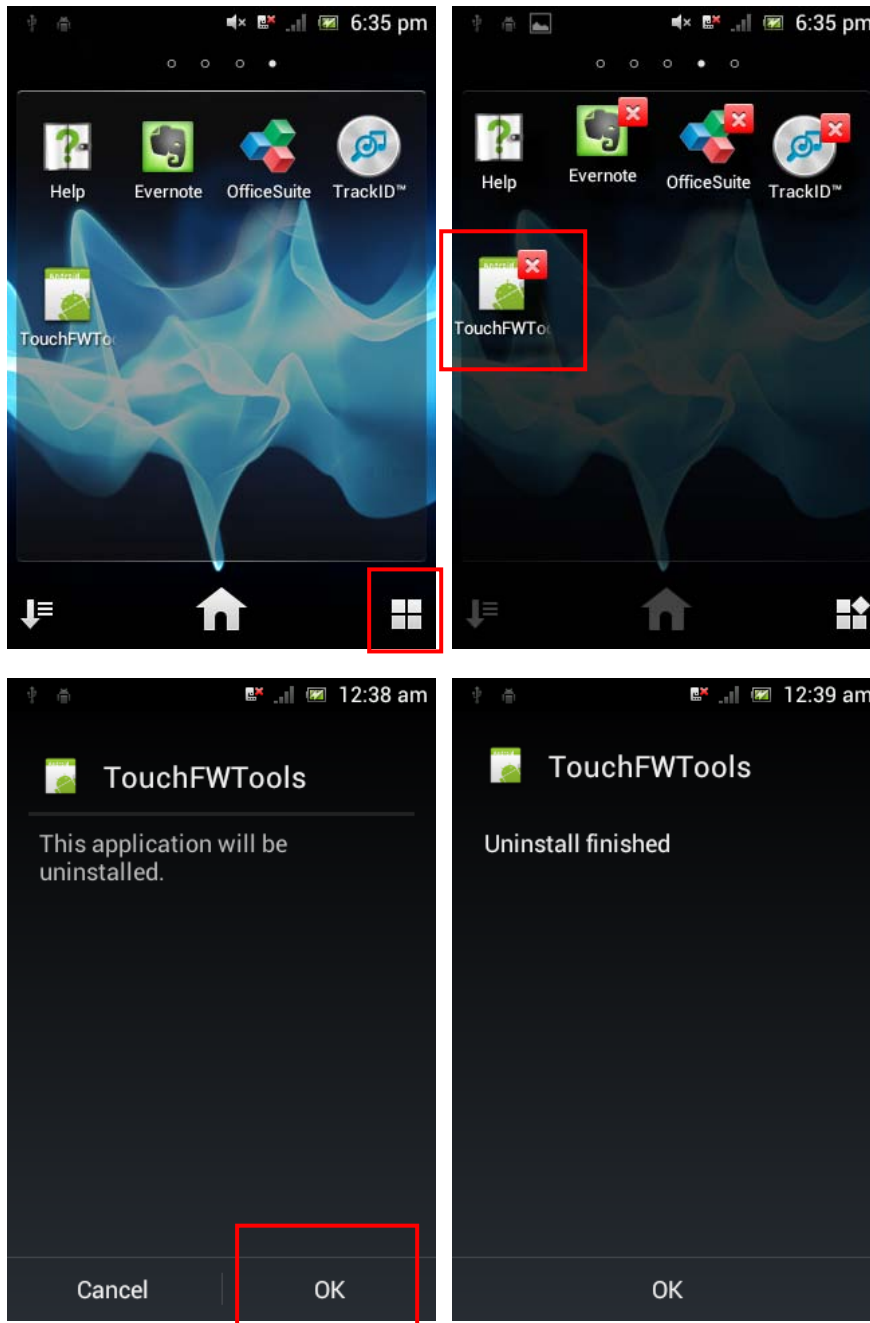
If touch test fail then long press "Home" key -> Touch FW Calibration to do calibrate again.



4. How to remove the APK

After touch test pass, please go to application page.

Press  → , then uninstall page will be shown up. Press ok to uninstall.



- ✧ After calibration, please go to device and press menu key → “Settings” → “Developer options” to disable “USB debugging”